

# VG Instruments

## VG Tenor Saxophone SFZ

### SFZ Sound Library

- VG Tenor Saxophone SFZ Sound Library, wav, sfz and aria format.
- The library includes two sets of samples
- More than 150 unique samples
- You can use WAV files directly in your DAW, or any other sampler plugin for further editing
- Set up to work with breath controllers (TEControl, MRT Audio, Yamaha BC3), wind controllers (AKAI EWI4000s, EWI5000, Roland Aerophone AE-10, AE-20, Pro AE-30, Yamaha WX, Robkoo R1, etc.) and MIDI keyboard controllers
- Each note was individually sampled to achieve maximum realism
- To use the library, you must have Aria Player or Sforzando by Plogue installed.
- Recorded sample quality: 24 bit / 44 kHz
- Best Balance of Natural Velocity Resolution and Data Size
- Library Size: 424 MB

### INSTALLATION

1. To start the installation process, download the library from the VGTrumpet.com website.
2. Extract the contents of the downloaded .zip file, which will create a folder named 'VG Tenor Saxophone SFZ\_1.1'. This folder contains the entire library, including the samples.
3. Choose where you want to store the library for future access.  
It can be an external hard drive, internal SSD, or your main hard drive.
4. To use the library, you need to install either Sforzando or ARIA Player by Plogue. Sforzando can be downloaded for free from the Plogue website, while you may already have ARIA Player if you have previously used Garritan products.
5. After installation, launch Sforzando or ARIA Player and open the VG Tenor Saxophone SFZ\_1.1 folder. Locate the .sfz and .aria files and drag and drop one of them into the open Sforzando (or ARIA) window.

## LOADING PATCHES

Depending on the MIDI controller and software you plan to use, choose the corresponding file:

**1** - VG Tenor Saxophone SFZ-KeybContr\_1.1\_sforzando.aria

or

VG Tenor Saxophone SFZ-KeybContr\_1.1\_ariaplayer.aria

Load one of these files into Sforzando or Aria Player if you are using a MIDI keyboard.

**2** - VG Tenor Saxophone SFZ-WindContr\_1.1\_sforzando.aria

or

VG Tenor Saxophone SFZ-WindContr\_1.1\_ariaplayer.aria

Load one of these files into Sforzando or Aria Player if you are using wind controllers such as Akai EWI, Roland Aerophone, Robkoo R1, or others.

**3** - VG Tenor Saxophone SFZ-BreathContr\_1.1\_sforzando.aria

or

VG Tenor Saxophone SFZ-BreathContr\_1.1\_ariaplayer.aria

Load one of these files into Sforzando or Aria Player if you are using breath controllers such as TEControl, MRT Audio, Yamaha BC3, or others.

If you receive an error message while trying to load the patch, similar to the one shown in this image, follow these steps:

Click the <settings> tab and in the "User files path" window specify the path to the instrument folder.

When choosing the User files path, refer to this example:

If the .aria and .sfz files are located at the following path:

D:\Sound Libraries\VG Tenor Saxophone SFZ\_1.1\,  
then the path specified in "User files path" should be:

D:\Sound Libraries\

The folder path should NOT be:

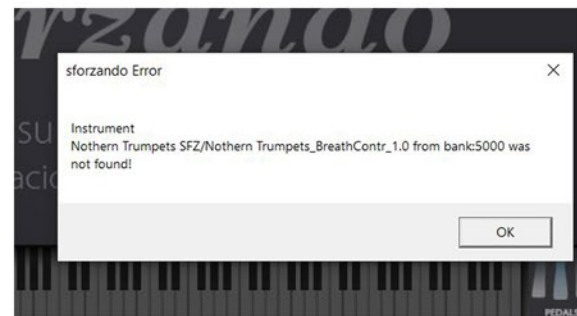
D:\Sound Libraries\VG Tenor Saxophone SFZ\_1.1\

or

D:\Sound Libraries\VG Tenor Saxophone SFZ\_1.1\VG Tenor Saxophone SFZ\_1.1\

Please do not rename the instrument files and folders.

After setting the User files path, restart Sforzando/Aria player.



## OPERATION

The upper section of the GUI follows the standard layout for all Sforzando libraries. However, please note that if you are using ARIA player, the GUI will appear differently, as ARIA is designed to handle multiple patches simultaneously.

In this section, you can select the instrument you want to use from all the libraries installed on your system. You will also find controls for Volume (CC7), Pan (CC10), and [Reverb] Send (CC91).

The four tabs below—Info, Controls, Effects, and Settings—allow you to navigate through different screens on the GUI.

On the right side, the Tune parameter allows you to adjust the pitch of the library in cents. Polyphony refers to the total number of available voices for the engine.

PB Range controls the pitch bend range.

Snapshot feature enables you to save your preferred mixes and settings locally, allowing for easy recall later on. This is particularly useful if you have a specific mix you frequently use across multiple songs or projects.



Select the 'Controls' tab and the above screen will appear.

This is an example of a patch screen controlled by a MIDI keyboard.

You can change the value of each parameter in the corresponding box, either using the knobs or faders on your MIDI keyboard by assigning them to the appropriate CC controller.

## KEYSWITCHES

VG Tenor Saxophone SFZ contains two presets accessed via keyswitches, meaning you must press the appropriate key on your MIDI keyboard to switch to the desired preset. This feature is useful for quickly switching between different playing styles and selecting different sound sets - warm or bright sound.

Here are the keys and their associated presets:

C2: Tenor Saxophone 1.

D2: Tenor Saxophone 2.

In the patch designed for wind controllers, the keyswitches are located two octaves below.