



## Northern Trumpets

### Free SFZ Sound Library

- Northern Trumpets SFZ Sound Library, wav, sfz and aria format.
- The library includes two sets of samples:
  - 1 - Open sound without a mute
  - 2 - Sound with the use of a Harmon mute
- More than 420 unique samples
- You can use WAV files directly in your DAW, or any other sampler plugin for further editing
- Set up to work with breath controllers (TEControl, MRT Audio, Yamaha BC3), wind controllers (AKAI EWI4000s, EWI5000, Roland Aerophone AE-10, AE-20, Pro AE-30, Yamaha WX, Robkoo R1, etc.) and MIDI keyboard controllers
- Up to 7 velocity layers per key
- Each note was individually sampled to achieve maximum realism
- To use the library, you must have Aria Player or Sforzando by Plogue installed.
- Recorded sample quality: 24 bit / 48 kHz
- Best Balance of Natural Velocity Resolution and Data Size
- Library Size: 887 MB

### INSTALLATION

1. To start the installation process, download the library from the VGTrumpet.com website.
2. Extract the contents of the downloaded .zip file, which will create a folder named 'Northern Trumpets SFZ\_1.1'. This folder contains the entire library, including the samples.
3. Choose where you want to store the library for future access.  
It can be an external hard drive, internal SSD, or your main hard drive.
4. To use the library, you need to install either Sforzando or ARIA Player by Plogue. Sforzando can be downloaded for free from the Plogue website, while you may already have ARIA Player if you have previously used Garritan products.
5. After installation, launch Sforzando or ARIA Player and open the Northern Trumpets SFZ\_1.1 folder. Locate the .sfz and .aria files and drag and drop one of them into the open Sforzando (or ARIA) window.

## LOADING PATCHES

Depending on the MIDI controller and software you plan to use, choose the corresponding file:

**1** - Northern Trumpets\_KeybContr\_1.1\_sforzando.aria

or

Northern Trumpets\_KeybContr\_1.1\_ariaplayer.aria

Load one of these files into Sforzando or Aria Player if you are using a MIDI keyboard.

**2** - Northern Trumpets\_WindContr\_1.1\_sforzando.aria

or

Northern Trumpets\_WindContr\_1.1\_ariaplayer.aria

Load one of these files into Sforzando or Aria Player if you are using wind controllers such as Akai EWI, Roland Aerophone, Robkoo R1, or others.

**3** - Northern Trumpets\_BreathContr\_1.1\_sforzando.aria

or

Northern Trumpets\_BreathContr\_1.1\_ariaplayer.aria

Load one of these files into Sforzando or Aria Player if you are using breath controllers such as TEControl, MRT Audio, Yamaha BC3, or others.

If you receive an error message while trying to load the patch, similar to the one shown in this image, follow these steps:

Click the <settings> tab and in the "User files path" window specify the path to the instrument folder.

When choosing the User files path, refer to this example:

If the .aria and .sfz files are located at the following path:

D:\Sound Libraries\Northern Trumpets SFZ\_1.1\,

then the path specified in "User files path" should be:

D:\Sound Libraries\

The folder path should NOT be:

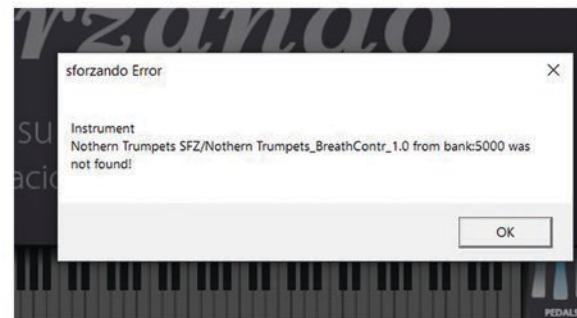
D:\Sound Libraries\Northern Trumpets SFZ\_1.1\

or

D:\Sound Libraries\Northern Trumpets SFZ\_1.1\Northern Trumpets SFZ\_1.1\

Please do not rename the instrument files and folders.

After setting the User files path, restart Sforzando/Aria player.



## OPERATION

The upper section of the GUI follows the standard layout for all Sforzando libraries. However, please note that if you are using ARIA player, the GUI will appear differently, as ARIA is designed to handle multiple patches simultaneously.

In this section, you can select the instrument you want to use from all the libraries installed on your system. You will also find controls for Volume (CC7), Pan (CC10), and [Reverb] Send (CC91).

The four tabs below—Info, Controls, Effects, and Settings—allow you to navigate through different screens on the GUI.

On the right side, the Tune parameter allows you to adjust the pitch of the library in cents. Polyphony refers to the total number of available voices for the engine.

PB Range controls the pitch bend range.

Snapshot feature enables you to save your preferred mixes and settings locally, allowing for easy recall later on. This is particularly useful if you have a specific mix you frequently use across multiple songs or projects.



Select the 'Controls' tab and the above screen will appear.

This is an example of a patch screen controlled by a MIDI keyboard.

You can change the value of each parameter in the corresponding box, either using the knobs or faders on your MIDI keyboard by assigning them to the appropriate CC controller.

## KEYSWITCES

Northern Trumpets contains six presets accessed via keyswitches, meaning you must press the appropriate key on your MIDI keyboard to switch to the desired preset. This feature is useful for quickly switching between different playing styles and selecting different sound sets - muted or open sound.

Here are the keys and their associated presets:

C2: Open Slow - Open Trumpet Sound.

This preset has a highly unpredictable sound attack.

It is more suitable for slow solo performances.

D2: Open Normal - Open Trumpet Sound.

The sound attack can sometimes seem unpredictable, especially at low volumes.

This preset is more suitable for solo performances in a slow to medium tempo.

E2: Open Fast - Open Trumpet Sound.

This preset has a precise sound attack.

It works equally well for solo performances in both fast and slow tempos.

F2: Harmon Slow - Harmon-muted Trumpet Sound.

This preset has a highly unpredictable sound attack.

It is more suitable for slow solo performances.

G2: Harmon Normal - Harmon-muted Trumpet Sound.

The sound attack can sometimes seem unpredictable, especially at low volumes.

This preset is more suitable for solo performances in a slow to medium tempo.

A2: Harmon Fast - Harmon-muted Trumpet Sound.

This preset has a precise sound attack.

It works equally well for solo performances in both fast and slow tempos.

In the patch designed for wind controllers, the keyswitches are located two octaves below.

One of the secrets to effectively using Northern Trumpets is that the precision of the attack depends on the velocity with which you strike the key on your MIDI keyboard.

The attack becomes more unpredictable when playing soft notes at a slow tempo.